

FCS Family Christian School



FCS Family Christian School

“...And the child increased in wisdom and stature and in favor with God and man.”
Luke 2:52

Our Mission

The mission of Family Christian School is to serve Christian families devoted to their children’s spiritual, academic, and social advancement by providing character development and academic achievement that celebrates the individuality, creativity, and talents of each child to help them navigate their way to true success.



About Us:

Family Christian School was established in 2004 with the aspiration to aid young people in becoming leaders beginning with early childhood and seeing them through their high school years. Helping children reach their God-given destiny is our main goal. We offer infant/toddler classes through the 12th grade.

Family Christian School is fully accredited through the Tennessee Association of Non-public Academic Schools (T.A.N.A.S.). We are a recognized Category II, accredited, non-public school. Our teachers are highly qualified in their fields.

We are excited when families join our family and get behind this vision. Family Christian School is not easily described. It is really something you have to experience. We like to say



it's a parent's love, a teacher's pride and a preacher's passion. Contact us today and set up a time to experience FCS.

Schedule your visit to FCS today.

731-300-3385

535 Denmark Jackson Rd.

Denmark, TN 38391

www.fcsofjackson.org



Where is FCS located?

FCS is located in Denmark, TN just a few minutes from downtown Jackson, near McKellar Sipes Regional Airport. The FCS campus is in the historic West High School Alumni Building, and provides a full size gymnasium, large classrooms, a great playground, and plenty of green space to be enjoyed throughout the year.

Community Service

Community service is a core value at FCS. Students serve various outreach services in our community and surrounding areas including RIFA, The Bridge Ministry, and others.

Uniforms

FCS students are required to wear FCS uniform shirts in green, orange, or white. These can be purchased at the Uniform Source. Khaki, black, and navy pants, shorts, skirts & jumpers can be purchased anywhere. Spirit shirts are available for purchase and can be worn on Fridays with jeans or jean shorts. Special sweatpants and shirts are available for our preschool students.

Tuition Information

Early Childhood/infants - (3 day program).....	\$3,460.00
Early Childhood/infants - (4 day program).....	\$4,560.00
Early Childhood/infants - (5 day program).....	\$5,550.00
Kindergarten – 12 th grade.....	\$5,550.00

Additional Fees

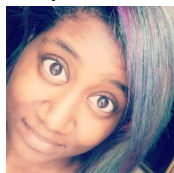
Enrollment Fee—Student	\$65
Curriculum Fee—Preschool.....	\$250.00
Curriculum Fee—K-12 th Grade.....	\$425.00

***Family Christian School,
where the creativity, talent, and
natural inclination of each child is
celebrated.***

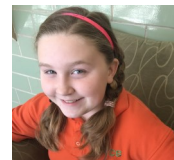
FCS Student Success...

FCS graduates are attending colleges across the region pursuing degrees in fields from technology to education, the arts to ministry, and more. They are working in industry and following their dreams to success. We strive to see our students equipped to enter the world through college preparedness and job readiness with strong character and work ethic. We could not be more proud of our students.

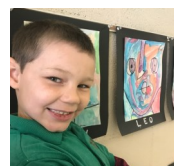
Here's what some of our current students and parents have to say about FCS:



"FCS has impacted my spiritual and academic life through relationships & guidance by amazing teachers and the great friendships I have made" Cydney (10th grade)



"I love FCS because we are a family & no matter what struggles we have, whether it be about school work or our faith, at FCS there is always someone waiting to help and guide you." Myra (8th grade)



"FCS is the best because I love math. I like my teachers and my friends." - Leo (1st grade)

"At FCS, I have direct contact with, and support from, the teachers and Principal. This allows us incredible accountability from the school for our daughter. This school is an extended family to her that stretches and grows her faith and academics. We love FCS!" – Dawn (mom of 8th grade student)

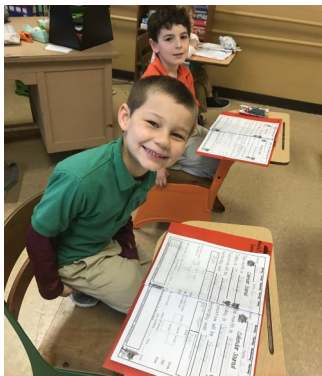
What makes FCS different

Latest Learning

Our Curriculum is wide and varied. It has been chosen to meet the individual needs of our students. We have spent over a decade developing our curriculum adoption to ensure that it meets the needs of students with varied learning styles. We also strive to teach our students how to learn and think divergently, not just to regurgitate information. FCS uses and realizes the value of educational technology, and students are taught to use technology as a resource. However, we put greater value on hands-on, collaborative learning experiences.

Loving and Caring Environment

Core Values at FCS center on character development—specifically the character traits of Servant hood, Compassion, and Empathy. We believe that part of providing a Christian education is to show compassion and care to others. Jesus demonstrated this while he was on the earth all the way to the cross. We offer many opportunities for students to see the needs of others and to serve those needs during the school year through our community service projects. Most importantly, we give them opportunities and encourage them to serve one another and their teachers during each school day, always looking at the needs of others before themselves. We are aware of the developmental characteristics for each age group that we teach. Many times,



what is perceived as a discipline problem is actually age-appropriate behavior. We are realistic about our expectations and make our program fit children's developmental needs. We are active observers of children and seek to be sensitive to their needs. If they are wiggly, we let them move; if they are frustrated, we adapt the activity or change our approach.



Small Class Sizes

The small student-to-teacher ratio at FCS allows for more individual interaction and instruction between teachers and students. The teachers are able to grasp the needs and abilities of their students to adjust and create learning opportunities geared specifically for them.



Developmentally Appropriate Practice

Developmentally appropriate practice is based on knowledge about how children develop and learn. "In a developmental approach to curriculum design...decisions about what should be learned, and how it would best be learned, depend on what we know of the learner's developmental status, and our understanding of the relationships between early experience and subsequent development..." (L.K.A.T.Z., 1995 Talks with Teachers of Young Children: A Collection, 1995). Family Christian School has designed an integrated and emergent curriculum, drawing from the insight and experience of such early childhood experts as Lilian Katz, Judy Harris Helm, Bobbi Fischer and Ursula Davis, to name a few. Our teachers will be continually reinventing and refreshing the instruction with emphasis on ideas and interests that emerge from the daily lives of our children. This process has proven to be effective in the best programs in the nation. Our goal is to provide the students in our care with individualized instruction assessment, keeping in the forefront what children need to know and how they learn. We refuse to follow the pattern of many preschool programs that simply push down curriculum in a watered down version. In an effort to keep the instruction relevant and meaningful to our students' development, we keep before us two criteria of sound curriculum: (1) Conveying important knowledge from a given discipline in many ways, and (2) Considering how children develop and learn.